

RIGS REPORTER



Newsletter of the Rhode Island Genealogical Society

March 9, 2009 Volume XI, Issue 4

RIGS to Meet in Newport April 4th

Contents

NERGC Conference	2
RIGS NERGC Bus Trip	3
January Meeting Recap	4
Library Fund Book List	5
Tips, Tidbits, Reunions	6
RIGS Book Orders	7
RIGS Events Calendar	8

The next RIGS meeting will be held on Saturday, April 4, 2009 at Harbor House, 111 Washington Street, in Newport. This will be a half-day meeting beginning at 1pm.



Barbara Carroll will speak to us about Italian Family Research. Barbara serves on the Board of Directors for the newly formed Exeter Historical Association (see separate piece).

Robin Porter will be giving us an update on the Gardiner House Project. He was instrumental in having the house dismantled and numbered, putting it safely away in storage until a location could be secured to have it rebuilt. Robin is looking for ideas and suggestions from RIGS members about where the house could be reassembled. In the past eight years, the only offers received have come from out of state and the hope is to have it remain in Rhode Island, possibly in North Kingstown.

The meeting will include a break-off into two family discussion groups. The Gardiner family discussion will be lead by Charlie

Carpenter. The Reynolds family group will be lead by Trish Harmon. Please bring your notes and materials pertaining to either of these family groups. Maybe someone can help you break through a brick wall. Also, if you would like to see reunions for these two families, let us know at the meeting and come with your ideas.

Please remember that non-members are always welcome to attend with their RIGS member friend. ▲

RIGS MEMBERS' MEETING **Saturday, April 4th** **Half day beginning at 1pm**

LOCATION

Harbor House

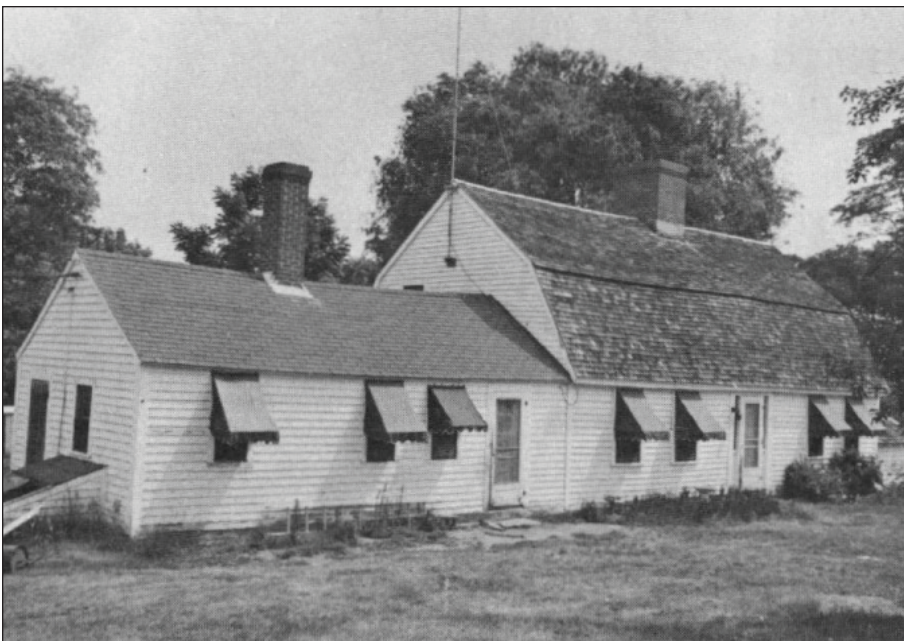
111 Washington Street, Newport

AGENDA

- Speakers: Barbara Carroll and Robin Porter
- Family Discussion Groups: Gardiner and Reynolds

MEETING DIRECTIONS

Directions to Harbor House: From North Kingstown and Jamestown go over the Newport/Pell Bridge and take the first downtown Newport Exit. At the bottom of the Exit, turn right onto Fairwell Street and at the first light turn right onto Van Zandt Street and follow to the end. At the water, turn left onto Washington Street and you will find Number 111 will be a short distance on your left. From the East Bay, follow Rte 138 past Jai-Alai and turn left at the next light onto the Bridge Access Road staying to the left and go under the Newport Bridge access onto Fairwell Street. At first light, turn right into Van Zandt Street and follow to the end. At the water, turn left onto Washington Street and Number 111 will be on your left.



RI MOLLUS

The Rhode Island Military Order of the Loyal Legion of the United States (RI MOLLUS), the Rhode Island State Commandery honors the Union Officers of the American Civil War 1861-1865. The first attempt to establish a MOLLUS Commandery for Rhode Island by Col. Elisha Hunt Rhodes, in 1878, became the Rhode Island Soldiers and Sailors Historical Society; it was later re-formed and chartered in 2001.

RI MOLLUS is working to educate RI about the Civil War; their office is located at the RI Grand Army of the Republic (GAR) Civil War Museum and Library, on the grounds of the Governor Sprague Mansion, 762 Dyer Avenue, Cranston, RI 02920.

Gregg Mierka, a Commander in the group, has been working on updating their website: <http://www.geocities.com/generalgreene1770/index.html> which began in 1996 and originally tied several similar organizations together and now they each have their own web URL.

When you visit their website, the homepage will give a choice to click on the RI MOLLUS set of flags to the left or the RI Soldiers and Sailors Historical Society flags to the right. The flags on the left will enter into the general directory page and then you will see along the far left of the page a list of clickable links, such as, RI Civil War Soldiers and Graves and Monuments which is new database they are currently working on; there are about 26,000 Civil War Veterans buried in RI. Check back periodically with this database as material is being added and updated.

Back on the RI MOLLUS homepage, if you click on the Soldiers and Sailors flags to the right, then you will enter into a web page where you can search for Civil War Biographies or Personal Narratives of the Rebellion. They are currently adding War Papers material, so check back often for updates.

For any questions about the RI MOLLUS or website, you may contact Commander, Gregg Mierka via Email at: RIBatteryA@verizon.net.

NERGC Conference Spring 2009



The New England Regional Genealogical Consortium (NERGC) will be holding its Bi-Annual Conference, "Discovering Family Treasures" on April 23, 24, 25 and 26 at the Expo Center in Manchester, NH.

The Conference is open to all, whether you are just beginning your family history research or whether you are a well-seasoned genealogist. Full-Conference participants will have the option to select from many lectures, most time segments list six different lectures from which to choose.

Conference Registration

Since the early-bird registration has past, the cost for the full three-day Conference registration is now \$135; a single day of attendance is \$90. There is an additional fee for participation in hosted luncheons of \$39 each; whereas a regular luncheon is \$26. There will be banquets held on Friday and Saturday evening for a cost of \$40 each.

Conference participants may register online at website: nergc.org/2009/, click on the link for the online registration form. A separate form must be filled out for each person attending the Conference. It is possible to have a friend attend for meals only by ordering additional meals within one registration. Payment may be completed online with credit card or print out the form in the online brochure, make check payable to NERGC 2009 and mail to: Mary Choppa, NERGC Registration, 131 Concord St., Nashua, NH 03064. RIGS will be sponsoring a one-day bus trip for Saturday, April 25th (see separate article).

For overnight accommodations, there are only a few rooms left at the adjoining Radisson

Hotel Manchester, located at 700 Elm Street. The group room rate per night is \$127 for up to 4 persons per room. To reserve, call the Hotel at 603-625-1000 or toll free at 1-800-333-3333 and reference your attendance at the NE Regional Genealogical Conference. If making your reservations online, see website: radisson.com/manchesternh and enter the group code: NERGC. If you are interested to room share with other RIGS members, please contact Pat Chappell at 401-783-7006 or via email: priscill@etal.uri.edu; or contact Helen Smith at 401-423-0442 or hhsctc@aol.com.

Exhibit Hall

The Exhibit Hall will be open to the general public, free of charge; grand opening of the Hall will be Thursday, April 23rd from 6:00 to 7:30pm. The hours will continue on Friday, April 24th from 8:15am to 5:00pm and on Saturday, April 25th from 8:15am to 4:00pm.

Society Fair

On Thursday, April 23rd a Society Fair will take place outside of the Exhibit Hall from 5:15 to 7:00pm. Society organizations based on genealogical, historical or specific family research will provide information to the general public, free of charge.

Ancestors Road Show

Professional genealogists will be available for twenty-minute consultations in a program called Ancestors Road Show, taking place on Friday and Saturday, April 24 and 25 from 9am to 12noon and again from 1pm to 4pm. A list of consultants is available on website nergc.org/2009/, click on the tab for Ancestors Road Show. The program is free for Conference attendees. Bring a concise statement of your query or issue with any supporting documentation and information. Pre-conference sign-up may be found on the website in mid-March 2009 or sign-up in person during the Conference on Thursday evening during the Society Fair or anytime on Friday or Saturday.

Conference E-Zine and Blog

When you visit the Conference website: nergc.org/2009/ and click on the tab that says E-zine, a page will open listing several E-zines to choose from. Each one gives a table of contents and each provides information and updates about the Conference.

There is also a Conference Blog set up to give the latest news about Conference events and activities. To read the Blog, visit website: nergc2009.blogspot.com/. ▲

NERGC One-Day Bus Trip



The Rhode Island Genealogical Society is sponsoring a one-day bus trip on Saturday, April 25th, 2009, to the Tenth New England Regional Genealogical Conference, in Manchester, New Hampshire. The cost for the bus is \$22 per person, and members are encouraged to bring along a non-member friend.

If you wish to attend the Conference lectures of the day, you need to sign up for a Saturday Only Registration, for a cost of \$90. You may register online via the website: nergc.org/2009/. Click on the link for the online registration form, which will take you through a five page process. Click on the continue button after completing each page. A separate form must be filled out per person attending the lectures. It is possible to have a friend attend for meals only by ordering additional meals within one registration. Payment may be completed online with credit card or print out the form in the online brochure, make check payable to NERGC 2009 and mail to: Mary Choppa, NERGC Registration, 131 Concord St., Nashua, NH 03064.

Please note, space is not guaranteed in specific lectures; however, the conference is offering six lectures per time segment. On Saturday, April 25th there will be five different time segments. Please refer to the brochure (available online) for individual lecture titles. Aside from the lectures there will be a morning workshop offered from 8:30am-10:30am on Cemetery Research and an afternoon workshop from 1:45pm-3:45pm on Deed Research; each workshop has a separate cost of \$30.


The Conference is a wonderful opportunity to expand your research skills, to attend classes by noted genealogists covering a wide range of topics, and to network with other researchers. The Ancestors Road Show could

be worth the trip alone—get a 20-minute free consultation (single-day Conference registration needed) with a professional genealogist on your most challenging research problem. The consultations will run from 9am to 12noon and from 1pm to 4pm. Refer to the Conference website NERGC.org and click on the tab for Ancestors Road Show for a list of the consultants, including RIGS member Cherry Bamberg. Check back with the site in mid-March for pre-conference sign ups. On-site sign ups will also be held during the day of attendance on Saturday. It is recommended that you bring a specific written statement of your research issue listing what, where, who, when and bring along any supporting information or documentation.

If your interest is in the Exhibit Hall, you need not sign up for the actual Conference. The Exhibit Hall will be filled with books, charts and other genealogical-related items—a genealogical shoppers dream!

The RIGS bus trip will offer pickup at Warwick Mall at 5:00am and at the East Providence Park and Ride, located on Route 44, at 5:15am. We need the early start to arrive in Manchester for 8:00am and we will include a coffee stop. The first Conference class of the day starts at 8:30am and the last class ends at 5:45pm. The bus will be departing from the New Hampshire area at 6:15pm. The bus will stop for dinner on the return trip (at your own cost) and should arrive back at Warwick Mall by 9:30pm.

For questions or if you prefer a different pick-up point, please contact Helen Smith at 401-423-0442 or via email at: hstct@aol.com. *Please refer to separate article for information on the full Conference.*

To sign-up for the April 25th bus trip to the NERGC, please fill in the coupon below, make your \$22 check payable to RIGS and mail to: Helen Smith, 530 West Reach Drive, Jamestown, RI 02835. 

NERGC BUS TRIP

NAME: _____

ADDRESS: _____

TELEPHONE: _____

EMAIL: _____

PICK UP WARWICK: _____

PICK UP EAST PROVIDENCE: _____

Spread the Word!

You can help us get the news out about RIGS meetings and trips. Please post notices of upcoming RIGS events at your local library, community center, coffee shop, etc. We are always looking for ways to encourage public interest in genealogy!

Sirius Genealogy 2.0

A newly developed website by Philip Hayes: siriusgenealogy.com/ provides information for us to learn how to leverage technology in our quest to find and document our ancestors, preserving that history for future generations.

On the website, you will find discussion pieces about using the latest creative techniques, websites, software applications, computers and other hardware in genealogy projects. If you click on the link under Categories labeled "Site News" it will take you to an article and link for a Google Custom Search Engine that Philip set up called the Sirius Genealogy People Finder: siriusgenealogy.com/search_cse.php.

If you have questions about the Sirius Genealogy website you may email Philip Hayes at Email: phayes@siriusgenealogy.com.

RIGS January 2009 Meeting Recap

The January 2009 all-day meeting of the Rhode Island Genealogical Society took place on the 31st at the North Kingstown United Methodist Church. Refreshments and luncheon were provided by the Hospitality Committee.

During the meeting, RIGS welcomed the following informative guest speakers—

Robert Grandchamp gave us a very enthusiastic and informative presentation about the Seventh RI Infantry during the Civil War—about 1200 volunteers from ages 14-63 served in this regiment. He mentioned online availability for photo requests of Civil War soldiers may be found through the website of the US Army Military History Institute. (*Please refer to separate article*)

Robert has authored the following three books —

His book titled *The Seventh Rhode Island Infantry in the Civil War* is available at the website: mcfarlandpub.com, enter his name in the quick search box to bring up this selection, the price of the book is \$49.95.

Robert's book titled *With Their Usual Ardor* may be obtained through website: Heritagebooks.com for a price of \$18.00; this book gives a detailed history about citizens of Scituate, RI and their contributions during the American Revolution.

His newest title *From Providence to Fort Hell: Letters from Company K, Seventh Rhode Island Volunteers* is also available through Heritagebooks.com for a cost of \$21.00; this book is currently at the printer but you may order online and it will be shipped when ready.

Our next speakers were Lorraine Tarket-Arruda and Gayle E. Waite, who

jointly authored *Charlestown, Rhode Island Historical Cemeteries*. They were able to



locate 95 cemeteries, not including Narragansett Indian burial grounds. Their book may be ordered by mail from Gayle E. Waite, P.O. Box 13, Hopkinton, RI 02833; the cost is \$40, plus \$5.00 shipping. Also, the book is available at the Charlestown Town Clerk's office, 4540 South County Trail, Charlestown; their hours are Monday thru Friday from 8:30am to 4:30pm.

Note, the March edition of "Rhode Island Roots" contains a review of this book by Jane Fletcher Fiske.

Andy Boisvert, archivist of the Old Colony Historical Society, 66 Church Street, in Taunton (open Tuesday thru Saturday from 10am to 4pm) spoke to us about preserving and storing our family papers. Here are a few tips: containers that are acid free are best to use; avoid storing in attics and basements; don't write on photos, make a copy of the original and write info on the copy; never put photos in direct sunlight, make copies of family photos to display and put away the originals. The following websites sell archiving materials: conservationresources.com; universityproducts.com (Andy mentioned they have the best

prices); Gaylord.com; lightimpressionsdirect.com; hollingercorp.com.



Our final speaker was Portia Thompson, who presented information on researching genealogical ties to the United Kingdom; she passed out extensive hand out information.

She recommended to anyone researching family members from British counties to join one of their family history societies, to locate these and for more research links visit the website for the Federation of Family History Societies at: ffhs.org.uk. For a listing of the 86 Counties of Great Britain, visit the website of the Association of British Counties at: abcountries.co.uk/counties/list.htm. Portia mentioned that for researching records prior to 1837, you will need to look at Parish records. In 1837, the civil registration began. The 1911 census is available through Ancestry.com. Portia also referenced a site for searching members of the military—this is the Commonwealth War Graves Commission website: cwgc.org. Click on their "search our records" link to go to their Debt of Honour Register database, searchable by surname for the place of burial for those servicemen and women that died during the two world wars.

RIGS wishes to extend our gratitude to all of our speakers for an informational packed meeting and to all of our attending members! ▲

RESOURCE FOR MILITARY RESEARCH

The US Army Military History Institute

The Institute is a branch of the Army Heritage and Education Center located in Ridgway Hall, at Carlisle Barracks, near the US Army War College, in Carlisle, PA. Carlisle is located about 20 miles west of Harrisburg.

Hours: If you visit in person, the Center is open Monday through Friday, from 9am to 4:45pm; also, on weekends from April to November, on Saturday from 10am to 4pm and Sunday from 12pm to 4pm. The Institute is free, but there is a fee-for-service for copies of holdings.

Holdings: The Institute is a library, archive and research facility. They have collected and preserved documents and materials pertinent to the history of the US Army, US Navy and Air Force. Their holdings include personal papers, diaries, letters and photos starting from the Mexican-American War through the current war times. They make available historical records, material and artifacts; including books, manuscripts, photos, and maps.

Contact info: To make an historical inquiry or for research assistance send via Email to: carl_ahec-ahm@conus.army.mil; or by phone at 717-245-3949. Finding aids and bibliographies may be located through their online research catalog, at website: carlisle.army.mil/ahec/index.cfm.

Photo Database: Using the database, for example, to search

for Civil War photos, click on the tab for Research Catalog, taking you to the Army Heritage Collection Online; then click on the left tab for Old Civil War Photos Database. Approximately 1.2 million photos (about 10,000 are from the Civil War) are included in their online archive.

Veteran Survey Program: The Center runs a survey program, collecting stories from veterans, to help researchers learn from this history. If you would like to share your story with the program, go to the website above and click on Organizations, then Visitor and Education Center, going to the Historical Programs section; click on the survey pertaining to the appropriate war era. For questions, call 717-245-3641 or contact via Email: carl_ahec-ves@conus.army.mil.

Army Heritage Day: This spring, the Center will host an Army Heritage Day event on May 16, 2009, with over 300 living history interpreters on the Army Heritage Trail. Participants will recreate military moments from history, including our current wars and ones going as far back as the French and Indian War.

Books Added to RIGS Collection

The following is a list of books that were purchased from the RIGS Library Fund donations. They have been delivered to the RIGS Collection at the Portsmouth Library.



- A History of Kingston, RI, 1700-1900
- American Authors Ancestry
- The American Genealogist
- The Armenians in Rhode Island
- Black and Indian Heritage in RI
- Browns of Providence Plantations
- Captain John and Sarah Whipple
- The Correspondence of the Colonial Governors of RI (2 Vols)
- Cumberland Historic Preservation Survey
- Cyclopedia of American Biography Vols. 25, 26, 27, 28, 29, and 30
- Daniel Wilcox of Puncatest
- The Descendants of John Bowen
- The Descendants of Seth Yeats of Newport RI and the Descendants of John Yeats of Providence, RI
- Diary of a Common Soldier in the American Revolution 1775-1783
- Diary of Joshua Hempstead
- Discovery and Plantation of New England
- Downtown Providence Historical Preservation Report
- Esek Hopkins
- Genealogical Classification by Family Group Coding for Descent from Common Ancestors (2 Vols)
- Genealogical Research in America (2 Volumes)
- Genealogy as a Pastime and Profession
- General Nathanael Greene by Gerald Carbone
- Golden Floral Album, RI Autographs
- Grandmother Mattie Thomas Kerby Carpenter Family Notes
- Havens-Rainey-Austin-Blakeman Ancestors and Descendents
- Historic Buildings of South County
- History and Roster of RI Masonry in World War II
- The History of Battery B, One Hundred Third Field Artillery, 26th Division
- History of Block Island
- History of Levi Greene by Mary S. Greene
- History of the Church of the Ascension, Wakefield, RI
- The Home lots of Early Settlers of Providence
- Honor Roll of RI Masons who served in World War I
- House of Robinson
- Journal of William Jefferay, Gentleman
- The Ladd Family
- Little Compton Remembers WWII
- Manufacturers and Businessmen of RI (1901-1904)
- Maps of Providence, RI
- Marriage Records of St. Cecilia's Catholic Church, Pawtucket, RI
- Matthias Farnsworth and Descendants
- Men of Progress (1896)
- Nathaniel Stevens
- Nicholas Utter of Westerly
- Nineteenth Century Family Photo Album (Palmer, Sherman, Greene, Lewis, Burdick, Saunders, Barber, Baggs, Gallup, Williams)
- North Kingstown Preservation Report
- Notes on Little Compton
- Our Oak Street Neighborhood
- Overseas Lodge 1939-49
- Pawtucket Past and Present
- Perryville Stories from the Past
- Providence Board of Trade Journal
- Recollections of Growing Up in South Kingstown
- Rehoboth in the Past, Newman's Oration
- Rhode Island Privateers
- Rhode Island: The American Guide Series
- The Search for the Mary and John (Vols. 1 and 2)
- Seventeenth Century Place Names of Providence Plantations (1636-1700)
- South Providence Historic Preservation Survey
- Souvenir Program of Jamestown, RI
- Stillwater News
- Successful Rhode Islanders
- Susquehannah Company Papers
- Tucker Family Genealogy (with Personal Notebook)

The Portsmouth Library is located at 2658 East Main Road, Portsmouth, RI. Their hours thru June 21st are: Sundays from 1pm to 5pm; Monday-Thursday from 9am to 8pm; Friday and Saturday from 9am to 5pm. From June 23rd thru September 2nd their hours are as follows: Closed on Sundays; Monday and Tuesday from 9am to 8pm; Wednesday-Friday from 9am to 5pm; and on Saturday from 9am to 1pm. For more information, call 401-683-9457; send email to: porlib@yahoo.com or visit website: portsmouthlibrary.org.

Exeter Historical Association

For the first time in its 266 year history, a historical association has been formed in the town of Exeter, RI. This group is dedicated to the collection, preservation and dissemination of knowledge and information about the history of Exeter and its residents, and to preserve artifacts and historically significant sites. Interest groups will focus on genealogy, general history, cemeteries, farms, maps, mills, one-room schoolhouses, churches, villages, military, grant writing and fundraising.

Donations of copies of genealogies which include Exeter families, and historical information, artifacts, photos and documents about Exeter, are always gratefully accepted.

All individuals and families with an interest in Exeter history and genealogy are welcome to join this newly formed organization. Their next meeting will be held on Tuesday, April 14 at the Exeter Public Library, beginning at 7pm.

The association will be hosting the Fourth Annual Exeter One-Room Schoolhouse Reunion on April 26, from 1pm to 4pm, at the Exeter Public Library.

For further information about the association visit website: exeterhistoricalassociation.blogspot.com. If you are not on the internet, you may send for a brochure at mailing address: Exeter Historical Association, 159 Old Voluntown Road, Exeter, Rhode Island 02822. For any questions, please contact Barbara Carroll at 401-228-7274.

Tips, Tidbits, Reunions

Descendants of Richard Smith of Wickford (1596-1666) Smith's Castle is inviting descendants of the site's first settler, Richard Smith, to join a family reunion at the museum's opening day "Bridge to the Past" on Saturday and Sunday, May 2-3, 2009. Attendees are encouraged to bring their lineages to share with their cousins. In addition to the family reunion, 17th-century re-enactors will recreate the ambience of the trading house Smith established about 1637, and the c1678 family home will be open for tours. For more information, contact Smith's Castle at smithscastle@earthlink.net or at 401-294-3521.

Tower Family Reunion

The Tower Genealogical Society, Inc., founded in 1907, is celebrating the 400th Anniversary of John Tower's Birthday (1609-1701); he was married to Margaret (Ibrook) Tower (1617-1700). The Society is hosting the Tower Family Reunion to be held June 26-28, 2009, in Hingham, Mass. The host hotel is Best Western, in Rockland. The room reservations are \$99 per night and include a free breakfast. To reserve, call 1-781-871-5660, please mention "Tower Family Reunion" to get the special rate.

The Old Derby Academy will serve as the reunion center, with registration activities taking place at the Best Western.

The Tower Family Reunion information and registration form may be found on website: towergenealogy.com. For questions, contact Patricia Brown at 805-878-2663 or via Email at: TowerReunion@live.com.

Lillibridge Family Reunion

Thomas and Sarah (Lewis) Lillibridge immigrated to Rhode Island in the late 1600's. The 10th Triennial Lillibridge Family Reunion will be held Wednesday thru Friday, July 22-24, 2009 at the Warner Springs Ranch, in Warner Hot Springs, CA (70 miles northeast of San Diego).

All ages are welcome to attend since the reunion will include events for children and young adults. Pricing will include two nights' lodging, five meals and use of all facilities. For final pricing and event details, please refer to website: geocities.com/lillibridgereunion/index.html

For reservations or to be added to the mailing list to receive the registration information, contact Amy Cassube via Email at: cassube@aol.com

or send postal mail to: 3263 Lansdown Lane, Ramona, CA 92065-3623.

Maxson Reunion Notice

Editor's Note: We had received permission to publish information about the planned Maxson Family Association Reunion for 2009; however, upon revisiting their website, the following notice was posted:

"NOTICE: A decision has been made by the MFA Board of Directors to postpone our next reunion, which was tentatively scheduled for September, 2009. We are now planning to have the reunion in 2010 and will provide more details on the specific month/days later this year."

The Maxson Family Association website is: maxson2000.net/ and they post information of interest to those researching Maxson-Maxon and associated family lines. They have a Research Center link to click on that takes you to a section where queries are posted. By visiting their website, you may also read about the Maxson Family DNA Project, learn about becoming a member in the Association and read about previous reunions.

Mystic Seaport, Collections Research Center

The Collections Research Center at Mystic Seaport houses maritime collections which are available to researchers in person at their library and also through their online resources at website: mysticseaport.org/library. The holdings at the Center include books, manuscripts, periodicals, ship plans, photographs, crew lists and seaman's protection certificates.

The Research Center is located at 75 Greenmanville Avenue (Route 27), Mystic, Connecticut 06355; their hours are from 10am to 5pm Wednesday through Friday. Directions from I-95: Take Exit 90 and follow Route 27 south toward Mystic Seaport and take a left at the traffic light in front of the Seamen's Inne (which is on your right), then turn right into the parking area. The entrance fronts Route 27.

For research assistance with any maritime questions, contact the staff via Email at: collections@mysticseaport.org or by phone at: 860-572-5367.

Editor review: I have visited this facility in person and highly recommend it to anyone researching ties to any US seaports. The staff is very knowledgeable and extremely helpful. ▲

ID	SPECIAL PUBLICATIONS of the RHODE ISLAND GENEALOGICAL SOCIETY	Price	Quantity	Total
CD30 NEW!	Thirty Years of Rhode Island Roots, 1975-2004 (CD) <i>Four more years and an improved user interface!</i>	NonMember Price: \$39.95 Special to Members: \$31.00	<input type="text"/>	<input type="text"/>
CLE NEW!	Thomas Clemence of Providence, R.I., and some of his descendants to the year 2007 Jane Fletcher Fiske for Roberta Stokes Smith (hardcover, 434 pp)	NonMember Price: \$35.00 Special to Members: \$31.00	<input type="text"/>	<input type="text"/>
GL3 NEW!	GLEANINGS from Rhode Island Town Records: East Greenwich Town Council Records, 1734-1774 <i>Special Bonus Issue of Rhode Island Roots, 2008, by Cherry Fletcher Bamberg (softcover, 150 pp)</i> <i>Price includes Shipping (no need to add additional shipping on this item)</i>	\$12.00	<input type="text"/>	<input type="text"/>
GL2	GLEANINGS from Rhode Island Town Records: Providence Town Council Records, 1789-1801 <i>Special Bonus Issue of Rhode Island Roots, 2007, by Linda L. Mathew (softcover, 150 pp)</i> <i>Price includes Shipping (no need to add additional shipping on this item)</i>	\$12.00	<input type="text"/>	<input type="text"/>
GL1	GLEANINGS from Rhode Island Town Records: Providence Town Council Records, 1770-1788 <i>Special Bonus Issue of Rhode Island Roots, 2006, by Linda L. Mathew (softcover, 150 pp)</i> <i>Price includes Shipping (no need to add additional shipping on this item)</i>	\$12.00	<input type="text"/>	<input type="text"/>
TIL2	The Tillinghasts in America, The First Four Generations Wayne G. Tillinghast (hardcover, 788 pp)	NonMember Price: \$39.00 Special to Members: \$35.00	<input type="text"/>	<input type="text"/>
TIL1	The Diary of Capt. Samuel Tillinghast of Warwick, Rhode Island, 1757-1766 Cherry Fletcher Bamberg (hardcover, 528 pp)	NonMember Price: \$29.00 Special to Members: \$25.00	<input type="text"/>	<input type="text"/>
GOR	Elder John Gorton & the Six Principle Baptist Church of East Greenwich, RI Cherry Fletcher Bamberg (hardcover, 630 pp)	NonMember Price: \$36.00 Special to Members: \$29.00	<input type="text"/>	<input type="text"/>
ELM	Elm Grove Cemetery of North Kingstown, Rhode Island Althea H. McAleer (hardcover, 392 pp)	NonMember Price: \$35.00 Special to Members: \$27.00	<input type="text"/>	<input type="text"/>
NBG	North Burial Ground Providence, Rhode Island Old Section 1700-1848 John E. Sterling (hardcover, 480 pp)	NonMember Price: \$39.00 Special to Members: \$31.00	<input type="text"/>	<input type="text"/>
SOK	South Kingstown, Rhode Island Historical Cemeteries John E. Sterling & James L. Wheaton IV (hardcover, 653 pp)	NonMember Price: \$39.00 Special to Members: \$35.00	<input type="text"/>	<input type="text"/>
STD	Daniel Stedman's Diary, 1826-1859 Henry Clay Oatley, Jr. (softcover, 424 pp)	NonMember Price: \$37.00 Special to Members: \$32.00	<input type="text"/>	<input type="text"/>
HUL	Huling Genealogy: Descendants of James & Margaret Huling Esther Woodworth Barnes (hardcover, 692 pp)	Special Offer: \$30.00	<input type="text"/>	<input type="text"/>

Order subtotal:

Rhode Island addresses add 7% state sales tax:
Shipping: \$4.50 for first item, \$1.00 each additional:
TOTAL ENCLOSED

Name _____

Address _____

City _____ ST _____ Zip _____

MAKE CHECK PAYABLE TO RIGS AND MAIL TO:

RIGS Books
PO Box 433
Greenville RI 02828

Or, order directly on our website: rigensoc.org**PLEASE CHECK YOUR ORDER!**

- Do not use member price if you are not a member.
- Make sure you add \$4.50 for postage for first item and \$1.00 for each additional item.
- All RI residents must pay 7% sales tax.

Books will not be shipped until the correct amount is received!

**Rhode Island
Genealogical Society
Officers & Board of Directors**

President

Thomas H. Wilber
860 376 3800
tomwilber140@msn.com

Past President

Robert Allen Greene

1st Vice President

Patricia Chappell

2nd Vice President

Helen Smith

Treasurer

Otis C. Wyatt

Assistant Treasurer

Doris Blaney

Recording Secretary

Tom Clarke

Corresponding Secretary

Marie McShane

Director – Term 3 Years

Letty Champion
Geraldine "Geri" Clarke
Lois Sorensen

Director – Term 1 Year

Andrew Boisvert
Charles Carpenter
Patricia Woodard-Harmon

RIGS Events Calendar in Brief

April 4, 2009 (Sat)
1:00pm

RIGS Member Meeting
Harbor House, 111 Washington Street, in Newport - Point Section, see Page 1 for details

April 23-26, 2009

NE Regional Genealogical Consortium (NERGC)
Bi-Annual Conference, Manchester, NH (see article)

April 25, 2009 (Sat)

RIGS Sponsored Bus One-Day Trip
NERGC Conference in Manchester, NH (see article)

May 17, 2009 (Sun)
1:00pm

RIGS Annual Meeting
Wickford Baptist Church

Membership Renewals and Directory

If you have not renewed your RIGS membership, please do so today as the deadline has now past and your membership is in danger of being dropped. Please remember to return the renewal notice with your payment. If you are renewing late, the 2009 issue of the *Gleanings* may still be purchased for \$12.00.

The new 2009 RIGS Directory will be available at the April meeting. *The Directory books are only available to members.* Watch for the 2009 RIGS Directory pricing and mail order information in the next issue of the *RIGS Reporter*.



**RHODE ISLAND
GENEALOGICAL SOCIETY**
PO BOX 433
GREENVILLE, RI 02828



The RIGS Reporter

*Published five times a year
with program*

Editors

Dorothy Chase
darpity@cox.net

Neil Dunay
ndunay@gmail.com

Graphics

Rachel Peirce

Membership

Pat Long
patricia.long@cox.net

Website

rigensoc.org